



FRC East Cherry Point



Support to the Warfighter

Products

- Airframes: AV-8B, V-22, H-1, H-46, H-53, EA6-B, H-2, H-3, H-60, C130
- Engines: F402, T400, T58, T64
- Components: DRP for 18,636 items; supporting over 193 Type/Model/Series
- Engineering/Logistics for all Naval Rotary Wing, V/STOL, C-130 and other systems

Customers

US Navy, US Marine Corps,
US Army, US Air Force,
US Coast Guard
and 24 Foreign Nations

Workforce Profile

- 3,200 Civilian/Contractor/Military Employees
- Average Age of Workforce: 46
- 5 Labor Unions



International Association of
Machinists and Aerospace Workers

- LL 2297
- LL1859



American Federation of Government
Employees

- LL 451
- LL2065



National Association of
Aeronautical Examiners

- Local 2

Economic Impact

- North Carolina's largest Industrial Employer East of I-95
- Budgeted Payroll: \$265.5M
- Avg Salary: \$66K
- Budgeted FY14 Sales: \$681.7M
- Budgeted FY14 Direct Labor Hours: 3.2M



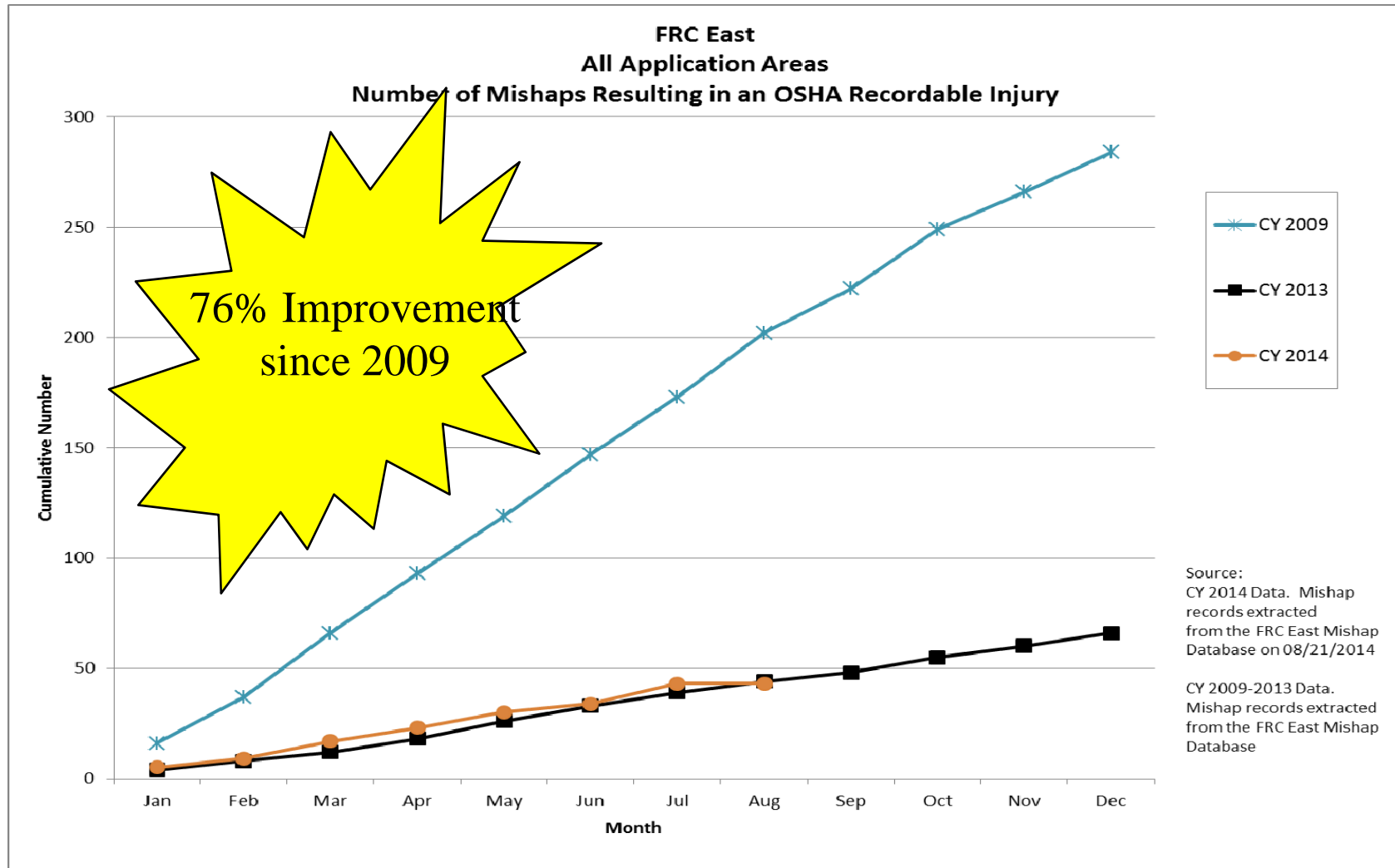
Safety Quality Throughput Cost



Reference herein to any specific commercial products, process, or service by trade name, trademark, manufacturer, or otherwise, does not constitute or imply its endorsement, recommendation, or favoring by the United States Government. The views and opinions that are expressed herein do not necessarily state or reflect those of the United States Government, and shall not be used for advertising or product endorsement purposes.



Pillar 1: SAFETY

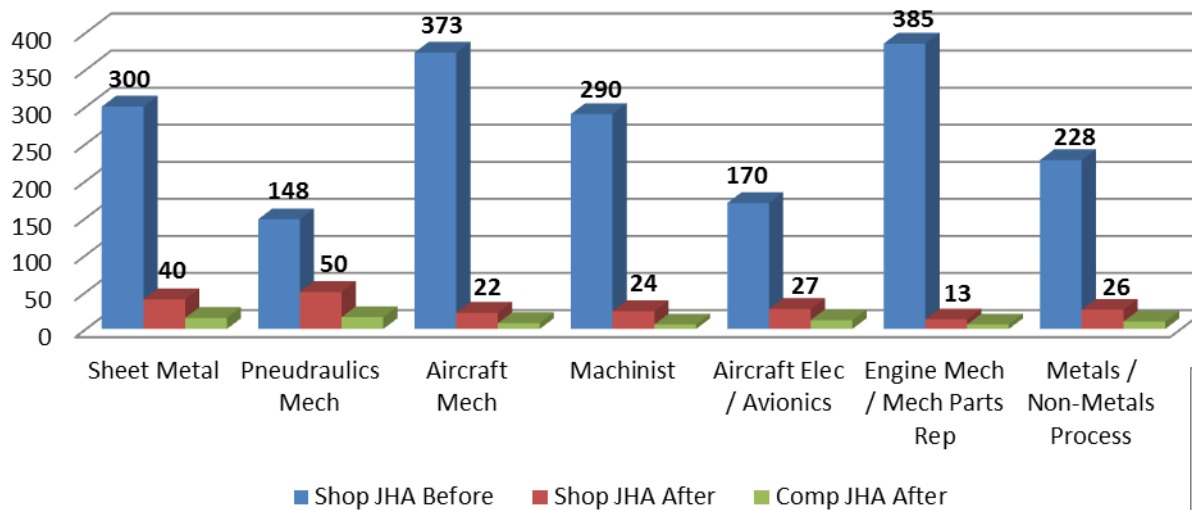




Sheet Metal Job Hazard Analyses

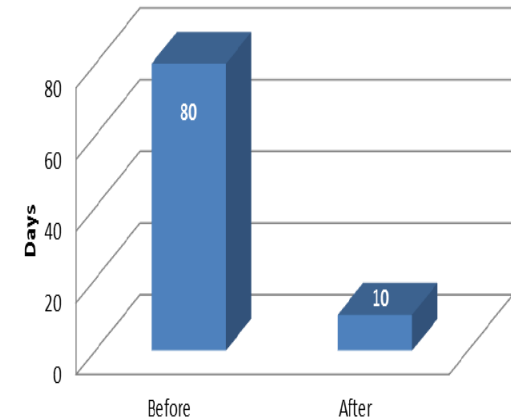


Job Hazard Analyses



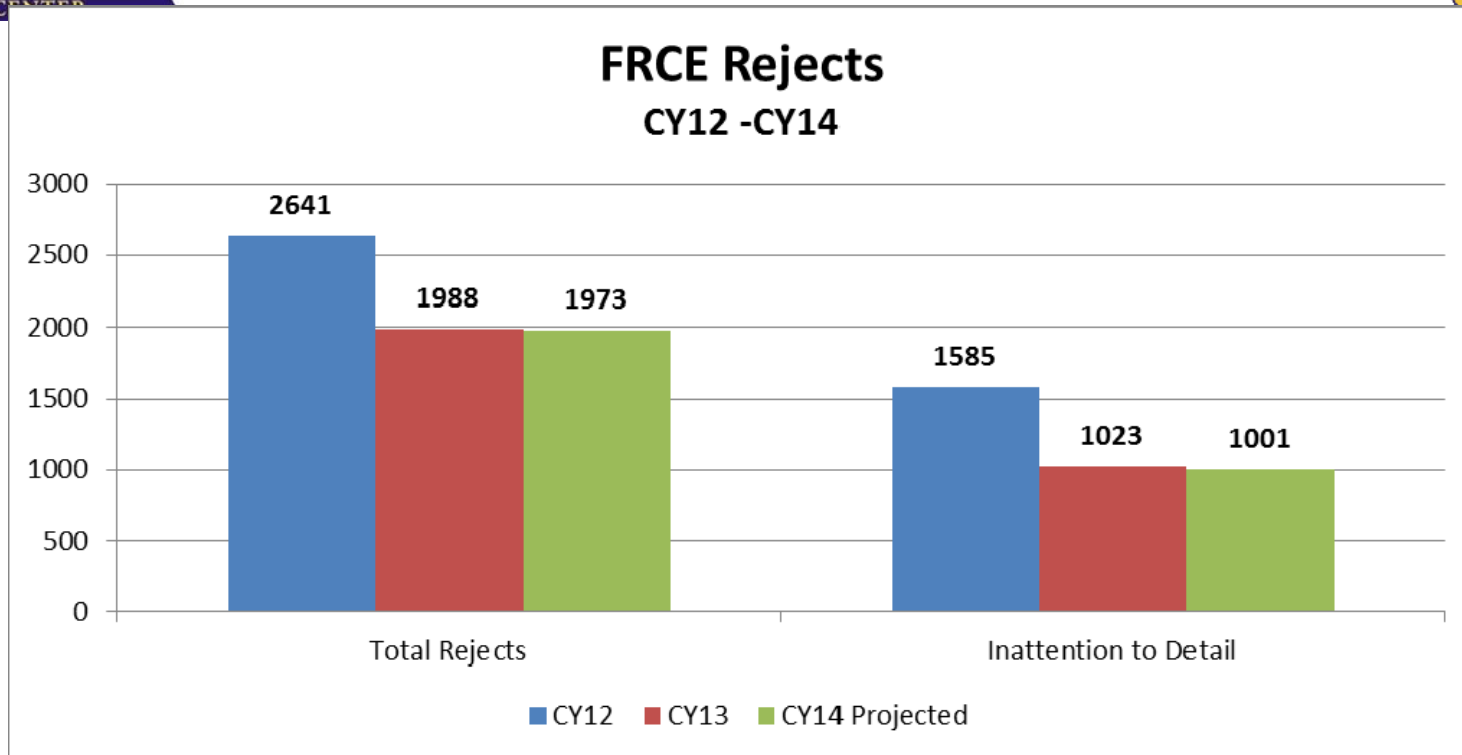
Prior to this project, each JHA took approximately 80 work days to be approved

Job Hazard Analyses Processing Time



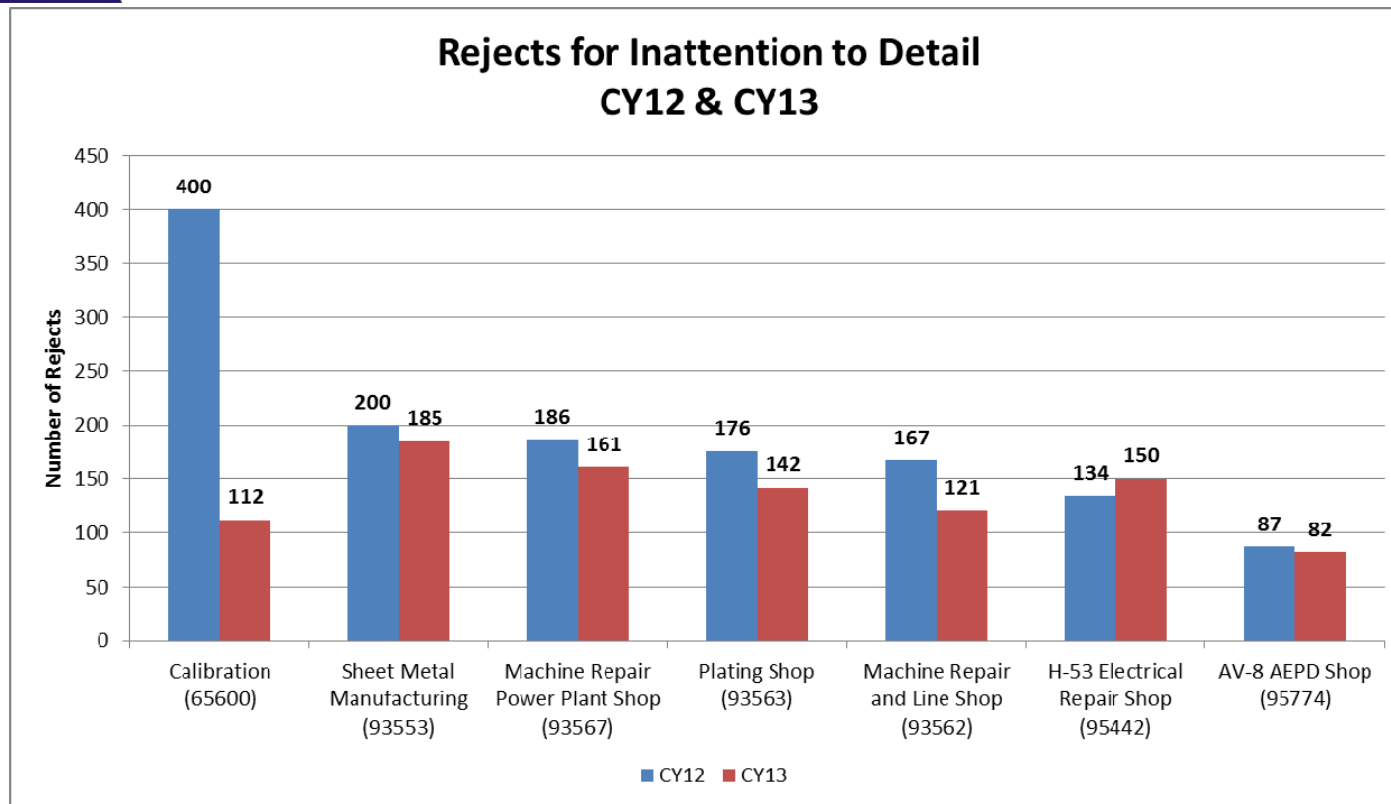


Pillar 2: QUALITY



Pendaran focus area – Reduce rejects due to inattention to detail

Achievement – 25% reduction in total rejects / 37% reduction in Inattention to Detail rejects



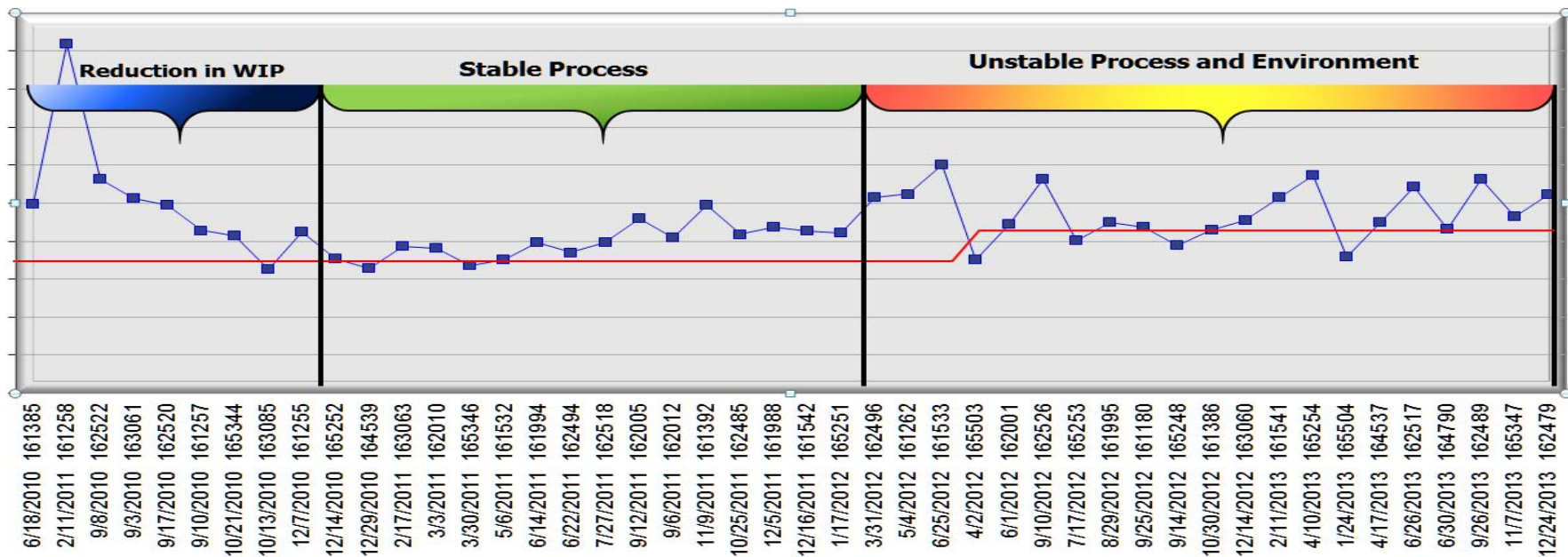
Seven shops targeted for Mistake Proofing training and small, focused projects to reduce defects.



Pillar 3: THROUGHPUT



- **H53 IMC Problem Statement**
 - **Unstable Upfront Conditions (Induction & Disassembly)**
 - **12% of Routed Parts have Unachievable Lead Time**
 - **Unstable Core Team on H-53 Line (High Turn-Over)**





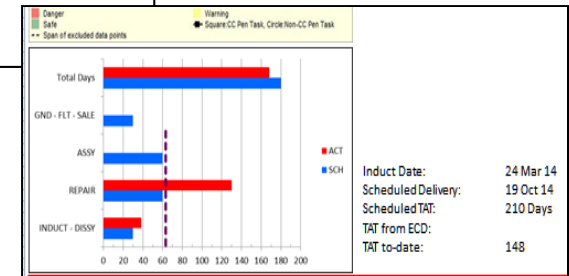
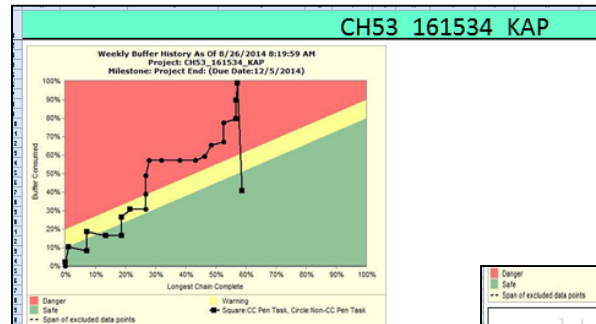
H53 IMC Improvement



Results To Date

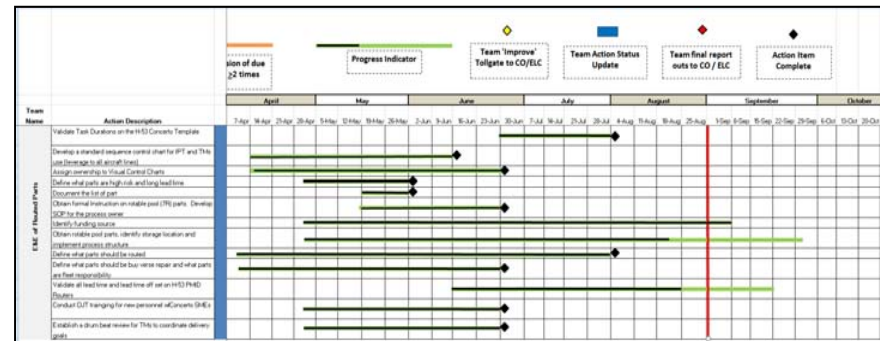
Improvements Realized to date

- Reduced Actual Disassembly by 4 days
- Visual Media Improves Floor Awareness
- Concerto Management Driving Priorities



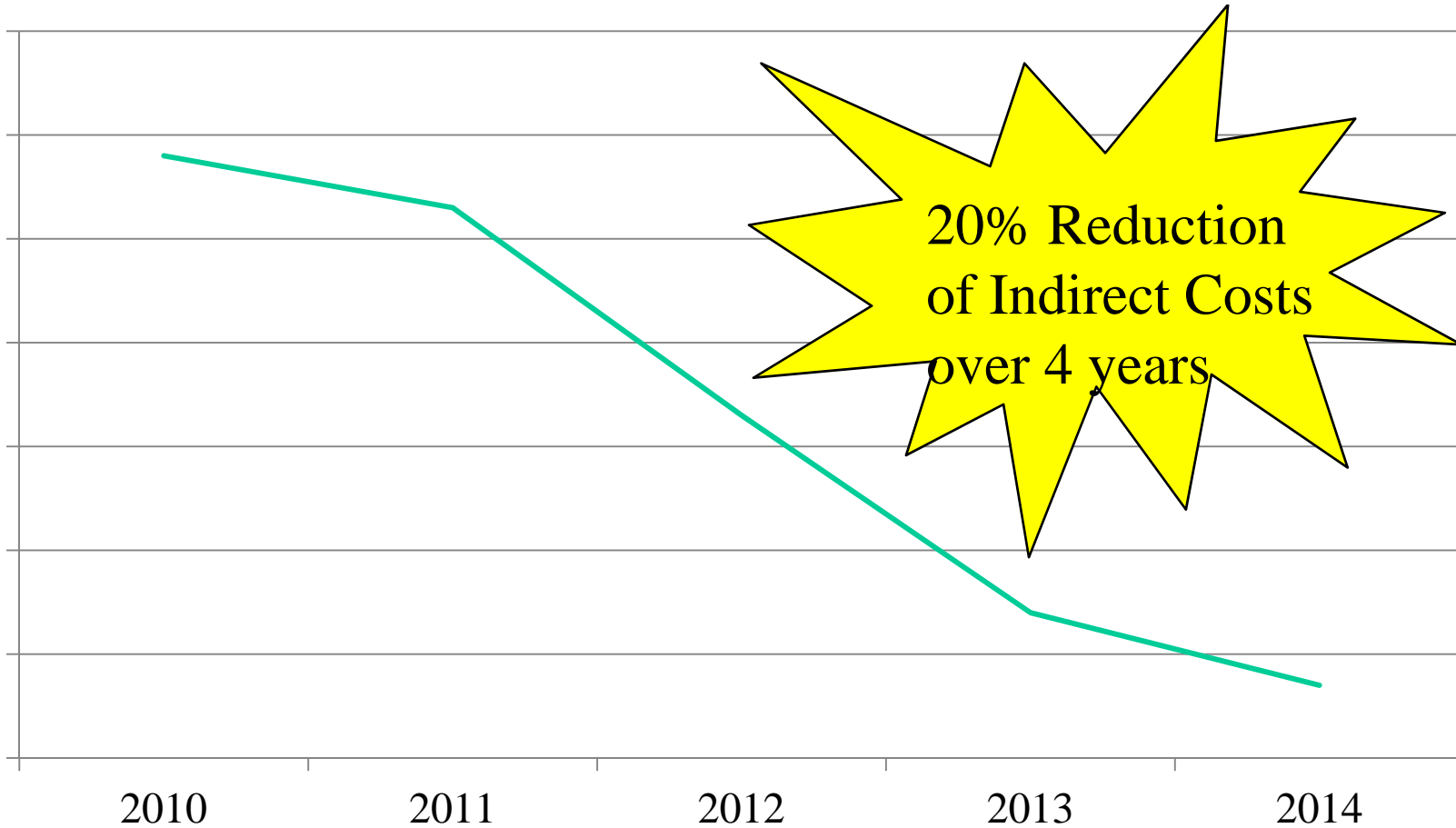
Induct Date: 24 Mar 14
 Scheduled Delivery: 19 Oct 14
 TAT from ECD: 210 Days
 TAT to-date: 148

Project Action Items - 4 remaining





Pillar 4: COST





Our Customer

